

Schleifspindel
Grinding spindle
Broche de meulage

ES 200 ER-GA
6005567

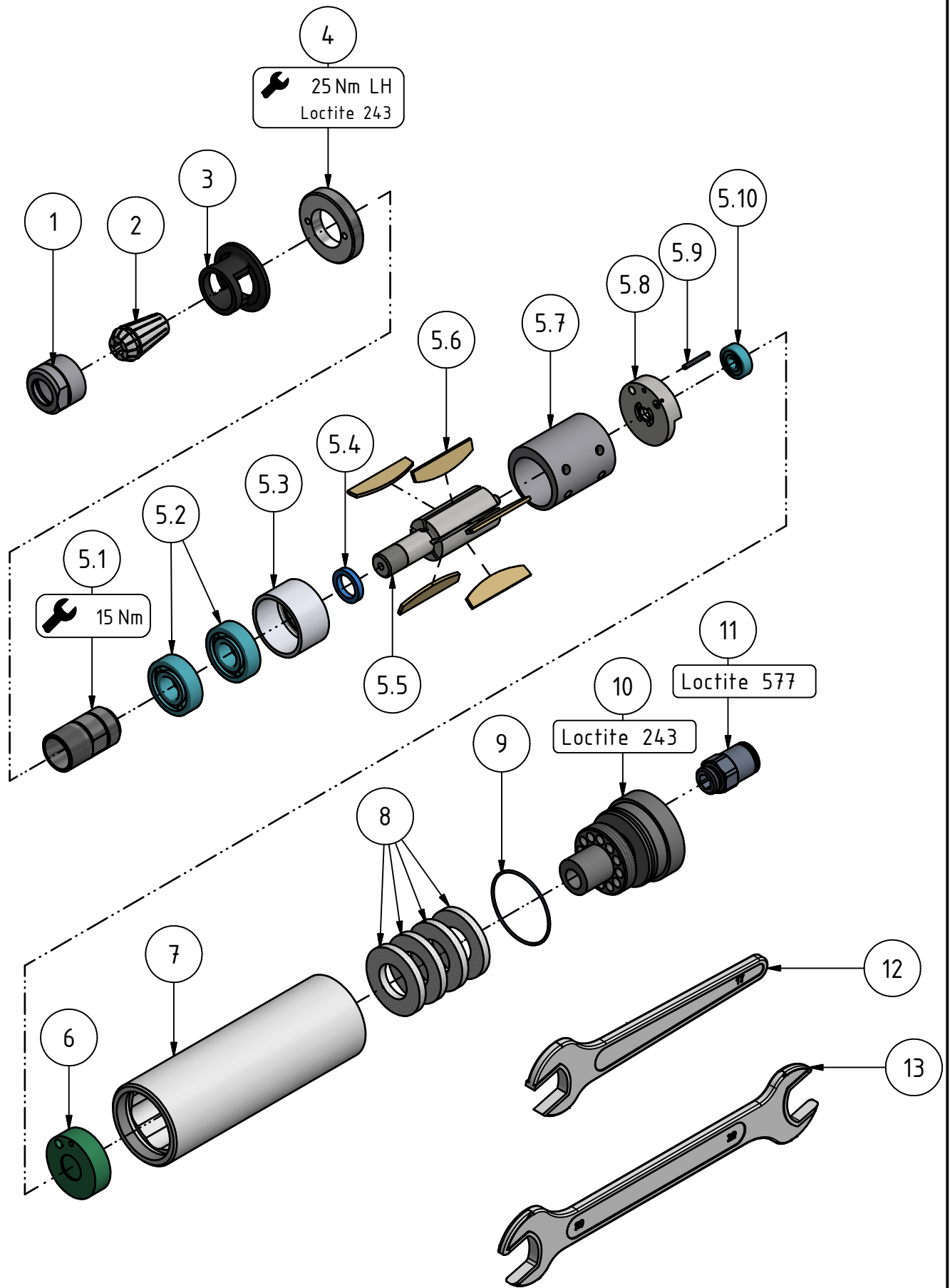
MANNESMANN
DEMAG

| Nr. No. | BENENNUNG | DESCRIPTION | DESIGNATION | Lager-Nr. Stock-No. No. de magasin | STÜCK QUTY. |
|------------|-------------------------|----------------------------|--------------------|------------------------------------------|----------------|
| 1 | Mini Mutter | nut | écrou | 29701 56 3 | 1 |
| 2 | Spannzange | collet | pince de serrage | 9369 880 | 1 |
| 3 | Schutzkappe | covering cap | capuchon | 29940 43 3 | 1 |
| 4 | Deckel | cover | couvercle | 60008 35 7 | 1 |
| 5 | Motorblock | motor | moteur | 60008 34 5 | 1 |
| 5.1 | Zangenspindel | spindle | broche de serrage | 29924 87 7 | 1 |
| 5.2 *) | Rillenkugellager | ball bearing | roulement à billes | 9357 266 | 1 *) |
| 5.3 | Lagerschild vorne | end plate front | flasque de palier | 60008 38 3 | 1 |
| 5.4 | Distanzring | distance ring | entretoise | 29900 28 3 | 1 |
| 5.5 | Rotor | rotor | rotor | 60008 37 3 | 1 |
| 5.6 | Lamelle | vane | palette | 29911 18 6 | 5 |
| 5.7 | Zylinder | cylinder | cylindre | 29911 17 3 | 1 |
| 5.8 | Lagerschild hinten | end plate rear | flasque de palier | 29911 21 3 | 1 |
| 5.9 | Spannstift | dowel pin | ergot | 9335 216 | 1 |
| 5.10 | Rillenkugellager | ball bearing | roulement à billes | 9357 046 | 1 |
| 6 | Lufteinlassstück | Air inlet | Entrée d'air | 29942 48 3 | 1 |
| 7 | Gehäuse | case | la caisse | 60055 58 7 | 1 |
| 8 | Dämpfung | silencer ring | silencieux | 47092 28 6 | 4 |
| 9 | O-Ring | o-ring | o-ring | 9319 195 | 1 |
| 10 | Lufteinlass | air inlet | entrée d'air | 60055 57 7 | 1 |
| 11 | Gerade Einschraubanschl | male stud fittings, hexago | Piquage droit male | 9359 319 | 1 |
| 12 | Schlüssel SW 17 | wrench SW 17 | clé SW 17 | 9331 042 | 1 |
| 13 | Schlüssel SW 20 | wrench SW 20 | clé SW 20 | 9331 023 | 1 |

*) 1 Paar (gepaartes Lager)

1 pair (paired)

1 paire (géméné)



ES 200 ER-GA
 60055567

MANNESMANN
DEMAG

Änderungsstand: 2

22.07.2021